

Screenshot of Blue2Cast customised software main page

Datasheet

Blue2Cast Monitoring Software

Blue2Cast is an advanced software application that plays a vital role in collecting, processing, and storing data. With its extensive functionalities, Blue2Cast offers a wide range of capabilities, including connecting to data loggers, modifying configurations, and uploading and downloading data.

Moreover, the application features a user-friendly web server that allows users to configure the application and access real-time data through a comprehensive dashboard. Additionally, historical data can be examined using graphs. But that's not all; Blue2Cast also provides other valuable functions, such as offering data via Modbus TCP/IP, periodic data exports, and making data available through an API with OAuth 2.0 verification.

B2C runs on Windows 11 Pro & Server and higher.

Features

- Collecting, processing and storing data
- User-friendly web server
- Real-time data
- Comprehensive dashboard
- Numeric and graphical data
- Offering data via Modbus TCP/IP
- Periodic data exports available
- Standard 4 but option to 10 viewers simultaneously
- Password protected login
- All pages can be customised by system administrator
- Extensive alarm handling (for example through Modbus output and a PLC)
- API enables you to exchange data between Blue2Cast and third-party products

Pages

Blue2Cast is a flexible software solution, we offer some default pages, but all pages can be customised by the system administrator. Pages can be also be added or removed.

Numeric data

Features numeric wind data, which is consistent across all three wind data sites. The description of this data is self-explanatory, providing users with clear insights into wind conditions.

At the bottom of the overview, meteorological sensor data is displayed. In cases where data isn't received, it will be indicated as a timeout.

Graphical data

The graphical wind roses provide visual representations of wind patterns. The wind rose displays the following data:

- Wind Speed in the centre.
Including the unit & averaging interval.
- Arrow indicates Wind Direction.
- The grey fill indicates the Variation of the Wind Direction.



Alarm indication on numeric data

Within the Blue2Cast data dashboard, alarm states can be configured by the admin.

Numeric parameters can be configured to show a background colour indicating the alarm status.

The alarms can be configured for any parameter and condition.



Main overview page (custom page)

The main page offers real-time data. Accessible through a comprehensive dashboard, the data is presented in various formats including numeric & graphical representations. The dashboard serves the purpose of providing a clear and intuitive overview of the data.



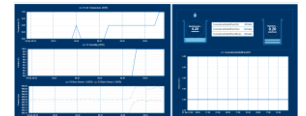
Wind page (custom page)

The wind page gives you more detailed wind data in graphical, numeric and chart form.



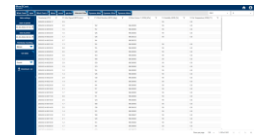
Meteo page (custom page)

The Meteo page gives you detailed data charts of Temperature, Humidity, Dewpoint, Barometric pressure and Precipitation, which has also a graphic presentation.



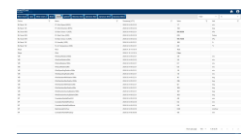
Historical page

On the Historical Data Page the user can select a time period to view the data of that period. You can select a custom time and date period or use one of the presets. A time stamp rounding can be set from millisecond, seconds, minutes, hours or day. The available parameters for download are set by the system administrator.



Recent data

The Recent data page provides users with real-time access to the latest data received from each device. Each column offers filtering options.



Welcome to the world of Observator

Solutions beyond expectations. That's what sets Observator apart. We believe in taking the extra step. Retaining our competitive edge, through innovation and uncompromised support, are key to success. As an ISO 9001:2015 certified company, we apply the highest quality standards to our products and systems.

Since 1924 Observator has evolved to be a trend-setting developer and supplier in a wide variety of industries. From instruments for meteorological and hydrological solutions, air and climate technology, to high precision mechanical production, window wipers and sunscreens for shipping and inland applications.

Solutions beyond expectations

Originating from the Netherlands, Observator has grown into an internationally oriented company with a worldwide distribution network and offices in Australia, Germany, the Netherlands, Singapore and the United Kingdom.

www.observator.com