



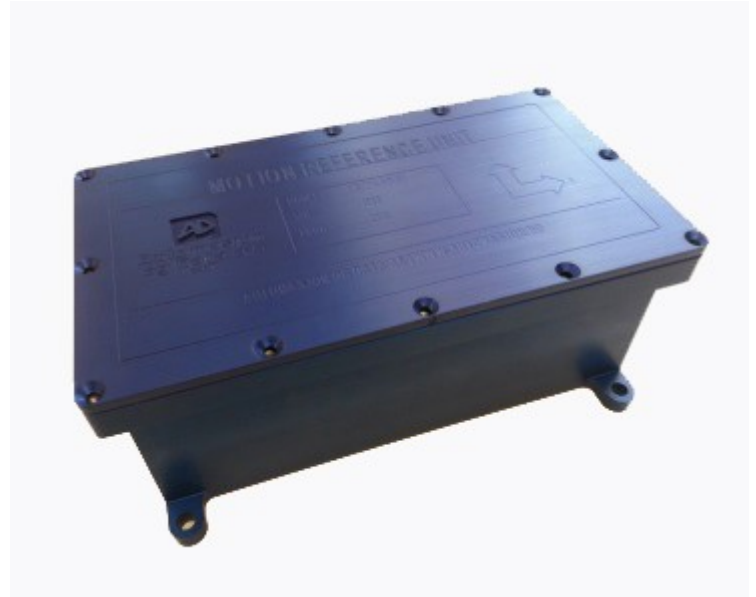
RMU-OMC-1 Motion sensor

The RMU-OMC-1 is a high accurate motion sensor for Marine and Offshore applications. The system is a combination package of hardware and software, designed to deliver the particular range of information demanded for use in helicopter flight operations involving a moving vessels or platforms.

The sensor specifically meets the recommendations contained in the Civil Aviation Authority (CAA) publication CAP437 – Offshore Helicopter Landing Areas – a guide to criteria, recommended minimum standards and best practices. The system delivers the full range of measurements defined in Chapter 6, paragraph 6.3 of the CAP437 publication. This sensor has been used for many times into complete Met systems in combination with the software program OMC-DOL-HMS.

Features:

- Meets CAA CAP437 requirements for deck motion measurement
- Incorporates latest MEMS technology
- Compact motion sensor with low power consumption
- Simple installation
- Easy to use operating software (OMC-DOL-HMS)
- Flexible mounting orientation



RMU-OMC-1

Motion sensor

DATA SUMMARY

TECHNICAL SPECIFICATION

Accelerometer X/Y/Z	Yes
Heave	Yes
Surge/Sway	Yes
Angular Rate	Yes
Roll/Pitch/Yaw	Yes

PERFORMANCE

Angle Accuracy Static	0.02° RMS
Angle Accuracy	0.05° RMS
Resolution Angle	0.005°
Angle Range Roll/Pitch	±30°
Heave Accuracy	3cm or 3%
Surge/Swat Accuracy	5cm or 5%
Heave Accelerometer Range	±30 m/s**2
Heave Accelerometer Static Accuracy	0.001m/s**2
Surge/Sway Accelerometer Range	±50 m/s**2
Surge/Sway Accelerometer Static Accuracy	0.005 m/s**2
Angular Rate Range	±75°/sec
Angular Rate Static Accuracy	0.05°/sec

COMMUNICATIONS

2 * RS232 Serial	Baud Fixed at 115200
1 * RS232/RS485 Serial	Baud Fixed at 115200
1 * RJ45 Ethernet	Configurable IP & Port
4 * 16bit ADC	+/- 5V
2 * 16bit ADC (Normally Reserved)	+/- 2V
Output	Various/Configurable
Software	Field Upgradeable

PHYSICAL AND ENVIRONMENTAL

Weight	7kg
Dimensions	322mm*204mm*115mm
IP Rating	IP66
Operating Temperature	-10 to +70
Mounting Orientation	Factory set
Power Supply	16-30V
Current Drain at 24V	200mamps
Maximum Acceleration	
Unpowered	1000g



Rietdekkerstraat 6
2984 BM Ridderkerk

P.O. Box 60
2980 AB Ridderkerk
The Netherlands

Phone +31 (0)180 463 411
Telefax +31 (0)180 463 530
E-mail info@observator.com
www.observator.com



OMC-DOL-HMS